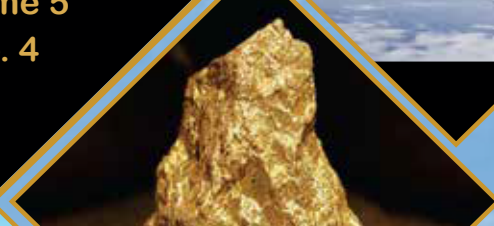




**CONSOLIDATED ZONAL  
ECONOMIC PERFORMANCE REPORT  
FOR THE QUARTER ENDING  
DECEMBER 2020**

**Volume 5  
No. 4**







*Consolidated Zonal Economic Performance Report*

## **BANK OF TANZANIA**

# **CONSOLIDATED ZONAL ECONOMIC PERFORMANCE REPORT FOR THE QUARTER ENDING DECEMBER 2020**

© Bank of Tanzania.

All rights reserved. This report is intended for general information only and is not intended to serve as financial or other advice. No content of this publication may be quoted or reproduced in any form without fully acknowledging the Bank of Tanzania Consolidated Zonal Economic Performance Report as the source. The Bank of Tanzania has taken every precaution to ensure accuracy of information, however, shall not be liable to any person for inaccurate information or opinion contained in this publication.

For any inquiry please contact:

Director of Economic Research and Policy

Bank of Tanzania, 2 Mirambo Street 11884 Dar es Salaam

Telephone: +255 22 223 3328/9

Email: botcommunications@bot.go.tz

This report is available in PDF at: <http://www.bot.go.tz>

*ISSN 2546-2008*



*Consolidated Zonal Economic Performance Report*

**Table of Contents**

Executive Summary .....	iii
1.0 ECONOMIC DEVELOPMENTS .....	1
1.1 Inflation Developments .....	1
1.2 Wholesale Prices of Food Crops .....	2
2.0 FOOD STOCK .....	3
3.0 SECTORAL PERFORMANCE .....	4
3.1 Livestock .....	4
3.2 Fisheries .....	5
3.3 Manufacturing .....	6
3.4 Mining .....	7
3.5 Tourism .....	8
3.6 Energy .....	9
4.0 GOVERNMENT REVENUE PERFORMANCE .....	10
4.1 Central Government Tax Revenue .....	10
4.2 Local Government Revenue Collection .....	11
5.0 TRADE .....	12
5.1 Cross Border Trade .....	12
5.2 Ports Performance .....	13
6.0 FINANCIAL SECTOR DEVELOPMENTS .....	14
6.1 Banks' Deposits and Lending .....	14
6.2 Savings and Credit Cooperative Societies .....	16
7.0 STATISTICAL ANNEXES .....	17



## Consolidated Zonal Economic Performance Report

### List of Tables

Table 1.1: Quartely Average Headline Inflation .....	1
Table 1.2: Average Wholesale Prices of Selected Food Crops .....	3
Table 2.1: Stock of Food Held by National Food Reserve Agency .....	4
Table 3.1: Livestock Sold in Registered Markets .....	5
Table 3.2: Fish Sold in Registered Markets .....	6
Table 3.3: Value of Selected Manufactured Commodities .....	7
Table 3.4: Value of Selected Mineral Recovery .....	8
Table 3.5: Visitors and Earnings in Tourist Attractions by Zone .....	9
Table 3.6: Production of Electricity and Natural Gas .....	10
Table 4.1: Tax Revenue Performance by Zone .....	11
Table 4.2: Tax Revenue Performance by Category .....	11
Table 4.3: Local Government Revenue Performance by Category .....	12
Table 5.1: Cross Border Trade .....	13
Table 5.2: Ports Performance .....	14
Table 6.1: Banks' Deposits .....	15
Table 6.2: Banks' Lending .....	15
Table 6.3: Percentage Share of Banks' Lending by Activity as at the end of December 2020 .....	16
Table 6.4: Performance of Savings and Credit Cooperative Societies .....	17





## **Executive Summary**

During the quarter ending December 2020, average headline inflation varied across zones when compared with the corresponding quarter in 2019. Inflation eased in Lake, Northern, Central, and Dar es Salaam zones, owing to decline in prices of food items, particularly maize and rice. An increase in inflation was observed in South Eastern and Southern Highlands zones, driven mainly by a rise in prices of some food and non-food items, respectively.

Performance of selected economic sectors improved during the quarter under review except for tourism. The value of livestock sold in registered markets increased by 15.1 percent, mainly on account of increase in demand and opening of new livestock markets. Likewise, the value of fish sold in registered markets grew by 1.9 percent attributed to improved fishing equipment and facilities, growing fish farming, and good weather conditions that led to increased volume of fish catches.

Value of selected manufactured commodities increased by 1.8 percent from TZS 2,702.1 billion recorded during the corresponding quarter in 2019, largely due to increased domestic and regional demand. The value of mineral recovery increased by 23.4 percent to USD 702.3 million, mainly associated with an increase in the quantity produced and a rise in the world market price of gold following the use of gold as a safe haven due to decline in return for other financial assets owing to challenges posed by COVID-19 pandemic. By contrast, the number of visitors to tourist attraction sites and earnings declined by 58.7 percent and 74.9 percent, respectively, compared with the corresponding quarter in 2019. The outturn was largely due to the outbreak of COVID-19 pandemic, which led to lockdown and travel restrictions in the source markets.

Central government revenue collection amounted to TZS 4,734.7 billion, equivalent to 79.2 percent of the target. Taxes on imports and local goods and services contributed 39.8 percent and 34.8 percent of the total collection, respectively. The Government continued to implement various measures to improve tax compliance, administration, and management, including the emphasis on using Electronic Fiscal Devices (EFDs), taxpayers' awareness campaigns, close monitoring, and follow-up of tax arrears. Revenue collection by Local Government Authorities (LGAs) increased by 9.2 percent to TZS 272.3 billion and was equivalent to 83.9 percent of the target, partly attributed to non-tax payment enforcement and introduction of point of sales (POS) devices.

Volume of cargo handled through Tanzania Mainland's ocean and lake ports declined by 3.1 percent to 4,652,888.4 tonnes. The decrease in cargo handling in Dar es Salaam port, which accounted for 91.6 percent of total cargo, was mainly on account of a decline in the volume of transit cargo, while in Mtwara port, the decline was explained by a low volume of export of cashew nuts and coal coupled with a reduction in import of fuel.

Total deposits mobilization by banks grew by 3.6 percent to TZS 20,926.1 billion at the end of December 2020, associated mainly with continued good performance in agent banking transactions and increased use of mobile banking platforms. Likewise, banks' credit to various economic activities recorded an annual growth of 5.8 percent to TZS 16,916.9 billion at the end of December 2020, with personal, trade, and agriculture absorbing 66.4 percent of the total outstanding credit.



## 1.0 ECONOMIC DEVELOPMENTS

### 1.1 Inflation Developments

Average headline inflation in different zones portrayed mixed trends when compared with the corresponding quarter in 2019 (**Table 1.1** and **Chart 1.1**). Inflation eased in Lake, Northern, Central, and Dar es Salaam zones, owing to the decrease in prices of some food items, largely maize and rice. An increase in inflation was reported in South Eastern and Southern Highlands zones. The rise in inflation in South Eastern zone was driven by prices of some food items, particularly sorghum, round potatoes, and beans, while in Southern Highlands was mainly on account of a rise in prices of some non-food items, including transport, gas and other fuels.

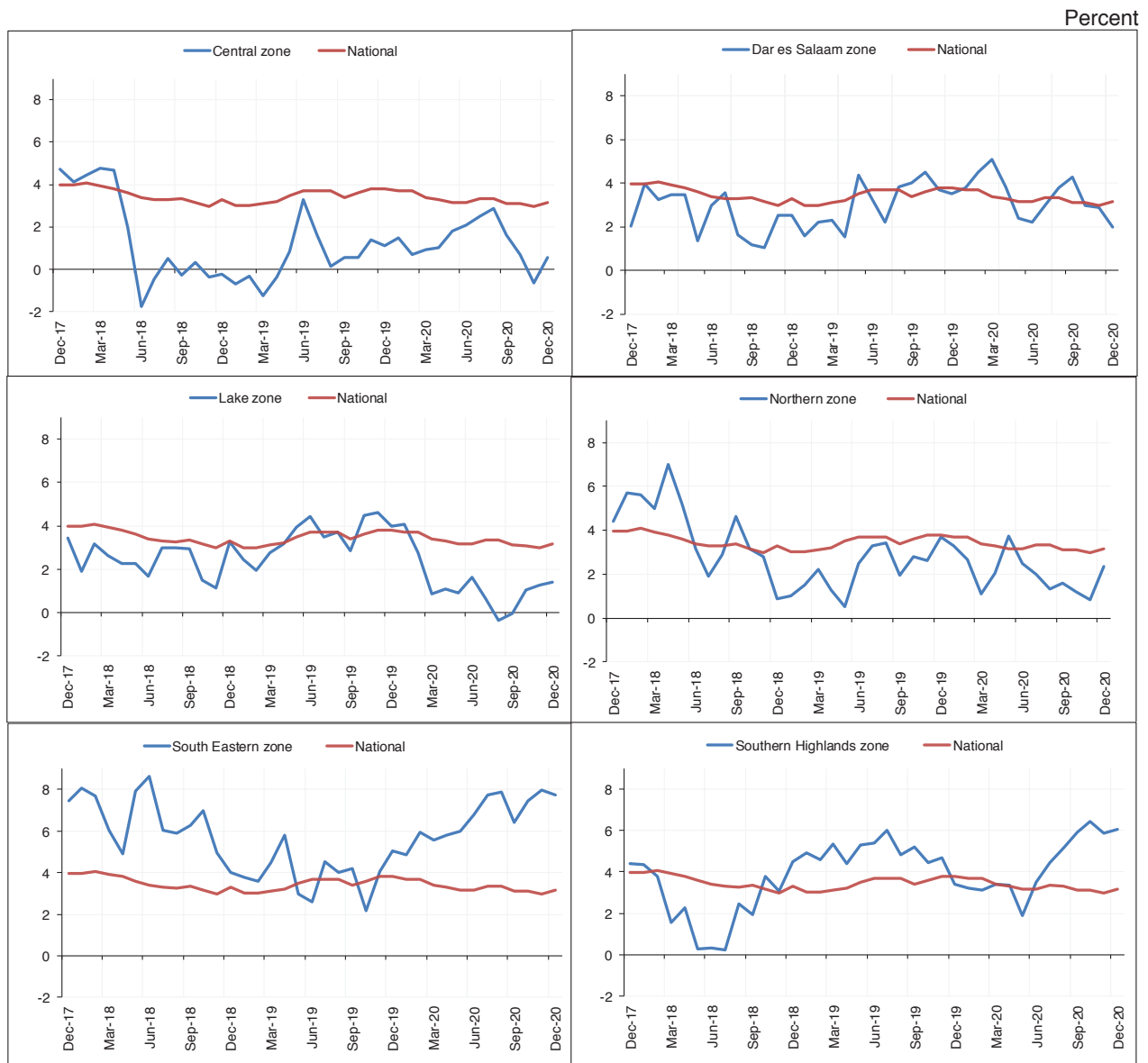
**Table 1.1: Quarterly Average Headline Inflation**

Quarter ending	National	Central	Dar es Salaam	Lake	Northern	South Eastern	Southern Highlands	Percent
Dec-19	3.7	1.0	3.9	4.4	3.0	3.8	3.2	
Mar-20	3.6	1.1	4.5	2.6	2.3	5.5	2.9	
Jun-20	3.2	1.6	2.8	2.7	2.7	6.2	5.2	
Sep-20	3.3	2.3	3.7	0.1	1.6	7.3	6.1	
Dec-20	3.1	0.2	2.6	1.2	1.5	7.7	7.7	

Source: National Bureau of Statistics and Bank of Tanzania computations



Chart 1.1: Year-on-Year Headline Inflation Developments



Source: National Bureau of Statistics and Bank of Tanzania computations

## 1.2 Wholesale Prices of Food Crops

Average wholesale prices of selected food crops increased during the quarter, save for maize, and rice, which recorded an annual decrease of 28.8 percent and 19.5 percent, respectively (**Table 1.2**). The observed decline in prices of maize and rice reflects good harvests contributed by adequate rainfall in 2019/20 crop season. The increase in prices of beans, bulrush millet, finger millet, sorghum, round potatoes, and wheat was attributed to relatively high demand.





**Table 1.2: Average Wholesale Prices of Selected Food Crops**

		TZS per 100 kg						
Quarter ending	Crop	Central	Dar es Salaam	Lake	Northern	South Eastern	Southern Highlands	Average
Dec-19	Beans	170,970.5	229,220.0	188,318.0	183,016.7	204,809.6	169,500.0	190,972.5
	Bulrush millet	61,770.4	112,361.0	n.a	84,796.0	n.a	n.a	86,309.1
	Finger millet	111,259.3	135,939.0	n.a	93,007.8	141,443.5	n.a	120,412.4
	Maize	72,189.4	89,331.0	84,450.0	87,196.3	87,446.9	69,476.0	81,681.6
	Rice	153,083.8	201,609.0	175,659.0	189,148.9	198,631.4	170,653.0	181,464.2
	Round potatoes	53,986.6	58,334.0	84,291.0	61,575.5	87,458.1	48,435.0	65,680.0
	Sorghum	85,577.5	91,688.0	92,758.0	84,149.6	105,234.1	n.a	91,881.4
	Wheat	n.a	124,831.0	n.a	113,048.0	n.a	108,856.0	115,578.3
Sep-20	Beans	188,954.3	226,147.3	182,411.9	193,192.9	208,277.9	163,888.9	193,812.2
	Bulrush millet	85,951.2	95,323.3	na	117,199.7	na	na	99,491.4
	Finger millet	136,514.1	124,139.0	na	132,358.6	126,904.8	na	129,979.1
	Maize	56,325.5	59,928.5	61,303.6	58,669.7	59,889.3	50,527.8	57,774.1
	Rice	148,315.3	168,613.5	122,551.7	158,382.3	180,350.3	134,722.2	152,155.9
	Round potatoes	75,004.8	70,640.4	85,862.8	75,264.7	83,713.8	47,834.8	73,053.6
	Sorghum	97,424.6	91,726.2	100,658.1	94,007.6	128,589.7	na	102,481.2
	Wheat	na	126,694.7	na	123,027.5	na	na	124,861.1
Dec-20	Beans	214,126.2	229,445.8	186,808.8	192,853.2	213,409.7	145,944.4	197,098.0
	Bulrush millet	91,419.7	88,920.6	na	96,509.3	na	n.a	92,283.2
	Finger millet	134,142.6	144,861.1	na	114,042.9	142,708.3	n.a	133,938.7
	Maize	54,981.1	60,786.5	62,915.3	60,575.4	61,693.1	47,944.4	58,149.3
	Rice	145,688.6	166,634.9	122,997.5	149,712.9	161,468.8	129,444.4	145,991.2
	Round potatoes	71,568.5	68,962.1	86,239.7	71,723.4	102,512.2	44,611.1	74,269.5
	Sorghum	99,429.9	89,504.4	84,936.2	73,702.0	129,629.6	na	95,440.4
	Wheat	na	124,215.6	na	118,561.9	na	na	121,388.7

Source: Ministry of Industry and Trade

Note: n.a denotes not available

## 2.0 FOOD STOCK

Stock of food held by the National Food Reserve Agency (NFRA) amounted to 110,371.5 tonnes at the end of December 2020 compared with 52,498.3 tonnes recorded in the corresponding period in 2019<sup>1</sup> (Table 2.1). During the quarter, the agency purchased 1,639.3 tonnes of cereals and sold 900.0 tonnes to the Cereals and Other Produce Board (CPB), while 82.8 tonnes were released to Prisons Department. Southern Highlands and South Eastern zones recorded the highest levels of food stock.

<sup>1</sup>The stock of food comprises maize, paddy and sorghum.



Consolidated Zonal Economic Performance Report

**Table 2.1: Stock of Food Held by National Food Reserve Agency**

		Tonnes				
Quarter ending	Zone	Opening balance	Quantity purchased	Quantity transferred in/out*	Quantity released	Closing balance
Dec-19	Central	5,371.0	0.0	0.0	30.0	5,341.0
	Dar es Salaam	500.0	0.0	0.0	0.0	500.0
	Lake	6,225.4	0.0	0.0	0.0	6,225.4
	Northern	1,976.7	0.0	0.0	1,330.4	646.3
	South Eastern	21,967.0	729.3	0.0	0.0	22,696.3
	Southern Highlands	25,670.6	330.5	0.0	8,912.0	17,089.1
	<b>Total</b>		<b>61,710.7</b>	<b>1,059.8</b>	<b>0.0</b>	<b>10,272.4</b>
Sep-20	Central	2,812.0	3,264.0	0.0	51.0	6,025.0
	Dar es Salaam	3,428.5	3,707.5	0.0	0.0	7,136.0
	Lake	4,589.5	2,421.3	0.0	137.3	6,873.5
	Northern	5,381.7	4,915.3	0.0	0.0	10,297.0
	South Eastern	9,705.1	13,764.7	-1,941.1	0.0	21,528.8
	Southern Highlands	26,781.2	29,127.8	2,001.8	4.0	57,906.8
	<b>Total</b>		<b>52,698.0</b>	<b>57,200.6</b>	<b>60.8</b>	<b>192.3</b>
Dec-20	Central	6,025.0	0.0	0.0	0.0	6,025.0
	Dar es Salaam	7,136.0	508.4	0.0	0.0	7,644.5
	Lake	6,873.5	1.2	0.0	82.8	6,791.8
	Northern	10,297.0	34.7	0.0	900.0	9,431.7
	South Eastern	21,528.8	535.1	-1,000.0	0.0	21,063.9
	Southern Highlands	57,907.0	560.0	974.3	0.0	59,441.3
	<b>Total</b>		<b>109,767.3</b>	<b>1,639.3</b>	<b>-25.7</b>	<b>982.8</b>

Source: National Food Reserve Agency

Note: The stock does not include the amount on transit; and \* positive number means net transfer in and negative number net transfer out

### 3.0 SECTORAL PERFORMANCE

#### 3.1 Livestock

Value of livestock sold in registered markets increased to TZS 409.1 billion from TZS 355.4 billion in a similar period in 2019 (**Table 3.1**). The outturn was largely on account of demand and opening of new livestock markets in South Eastern zone. Central and Lake zones accounted for the largest shares of the total value at 28.7 percent and 26.1 percent, respectively.



Consolidated Zonal Economic Performance Report

**Table 3.1: Livestock Sold in Registered Markets**

Quarter ending	Livestock	Unit of measure	Central	Dar es Salaam	Lake	Northern	South Eastern	Southern Highlands	Total
Dec-19	Cattle	Head	205,309	90,570	145,420	86,577	21,748	42,655	592,279
		Value (Millions of TZS)	101,775.4	66,874.9	66,059.8	52,771.1	12,793.9	22,609.1	322,884.1
	Goats	Head	133,865	54,689	69,011	63,836	14,338	11,874	347,613
		Value (Millions of TZS)	8,237.3	4,045.3	3,717.5	6,837.2	1,037.6	763.5	24,638.4
	Sheep	Head	44,484	7,884	26,714	45,135	1,881	2,390	128,488
		Value (Millions of TZS)	2,171.1	539.4	1,262.1	3,597.7	133.6	157.5	7,861.4
Total	Value (Millions of TZS)	112,183.8	71,459.6	71,039.4	63,206.1	13,965.0	23,530.1	355,384.0	
Sep-20	Cattle	Head	211,238	89,870	199,688	146,084	26,166	42,782	715,828
		Value (Millions of TZS)	114,704.3	104,582.1	90,381.9	80,876.0	16,089.6	20,942.5	427,576.3
	Goats	Head	152,386	42,275	92,212	135,071	17,674	10,264	449,882
		Value (Millions of TZS)	9,389.7	5,260.9	5,154.0	17,185.0	1,085.3	749.1	38,824.0
	Sheep	Head	44,626	7,409	30,773	53,485	2,652	3,826	142,771
		Value (Millions of TZS)	1,946.3	734.4	1,372.2	4,908.0	181.9	305.0	9,447.8
Total	Value (Millions of TZS)	126,040.3	110,577.4	96,908.1	102,969.0	17,356.7	21,996.6	475,848.1	
Dec-20 <sup>P</sup>	Cattle	Head	199,863	62,525	218,095	114,008	41,433	43,936	679,860
		Value (Millions of TZS)	106,772.1	67,735.4	97,825.1	48,326.7	24,426.9	21,723.8	366,809.9
	Goats	Head	133,077	34,035	106,518	114,558	21,547	10,428	420,163
		Value (Millions of TZS)	8,689.0	4,292.2	6,053.9	13,351.9	1,510.0	687.1	34,584.1
	Sheep	Head	41,268	7,655	60,322	20,951	1,714	2,676	134,586
		Value (Millions of TZS)	2,038.8	759.8	3,040.3	1,488.8	154.0	195.3	7,677.0
Total	Value (Millions of TZS)	117,499.9	72,787.4	106,919.4	63,167.4	26,090.8	22,606.2	409,071.1	
Percentage contribution Dec-20			28.7	17.8	26.1	15.4	6.4	5.5	100.0

Source: Regional Administrative Secretary Offices, Ministry of Livestock and Fisheries, and Bank of Tanzania computations

Note: p denotes provisional data

### 3.2 Fisheries

Value of fish sold in registered markets increased by 1.9 percent to TZS 96.7 billion from TZS 94.9 billion recorded in the corresponding period in 2019. The increase in value was recorded in all zones except Central and Lake zones, attributed to improved fishing equipment and facilities, growing fish farming, and good weather conditions that led to increased volume of fish catches (**Table 3.2**). The decline in value in Central zone was partly explained by the temporary closure of fishing activities at Kilosa dam, while in the Lake zone, which contributed 50.4 percent of the total value, it was on account of a decrease in fish catches.



Consolidated Zonal Economic Performance Report

**Table 3.2: Fish Sold in Registered Markets**

Zone	Unit of measure	Quarter ending			Percentage change		Percentage contribution Dec-20
		Dec-19	Sep-20	Dec-20 <sup>p</sup>	Sep-20 to Dec-20	Dec-19 to Dec-20	
Central	Tonnes	328.1	137.1	161.1	17.4	-50.9	0.8
	Millions of TZS	1,409.3	633.9	750.9	18.4	-46.7	0.8
Dar es Salaam	Tonnes	2,915.6	2,845.8	3,678.9	29.3	26.2	17.5
	Millions of TZS	9,939.0	8,361.5	11,517.7	37.7	15.9	11.9
Lake	Tonnes	10,816.9	6,017.4	6,629.9	10.2	-38.7	31.6
	Millions of TZS	55,699.3	39,790.3	48,682.2	22.3	-12.6	50.4
Northern	Tonnes	968.0	2,121.7	1,631.7	-23.1	68.6	7.8
	Millions of TZS	2,341.2	7,559.9	5,470.2	-27.6	---	5.7
South Eastern	Tonnes	2,045.1	4,759.3	5,468.7	14.9	---	26.1
	Millions of TZS	13,594.2	17,504.2	17,629.2	0.7	29.7	18.2
Southern Highlands	Tonnes	3,238.9	3,497.7	3,397.3	-2.9	4.9	16.2
	Millions of TZS	11,936.7	12,570.7	12,636.4	0.5	5.9	13.1
Total	Tonnes	20,312.6	19,378.9	20,967.5	8.2	3.2	100.0
	Millions of TZS	94,919.8	86,420.6	96,686.5	11.9	1.9	100.0

Source: Regional Administrative Secretary Offices and Bank of Tanzania computations

Note: p denotes provisional data; and “---” a change that exceeds 100 percent

### 3.3 Manufacturing

Selected manufactured commodities value rose by 1.8 percent to TZS 2,751.3 billion from the corresponding quarter in 2019, largely attributed to increased domestic and regional demand. All zones registered increase in value except South Eastern and Southern Highlands zones. The decrease in Southern Highlands and South Eastern zones was partly associated with a temporal closure of some of manufacturing firms for maintenance and relatively low export demand for some products such as ceramics and plywood. Dar es Salaam zone accounted for 50.9 percent of the total value of selected manufactured goods, followed by Northern and South Eastern zones at 15.6 percent and 15.5 percent, respectively (**Table 3.3**).



Consolidated Zonal Economic Performance Report

**Table 3.3: Value of Selected Manufactured Commodities**

Zone	Billions of TZS					
	Quarter ending			Percentage change		Percentage contribution
	Dec-19 <sup>r</sup>	Sep-20	Dec-20 <sup>p</sup>	Sep-20 to Dec-20	Dec-19 to Dec-20	Dec-20
Central	134.1	150.4	166.4	10.7	24.1	6.0
Dar es Salaam	1,369.1	1,349.0	1,399.6	3.8	2.2	50.9
Lake	151.8	134.4	154.5	15.0	1.8	5.6
Northern	363.3	338.5	429.6	26.9	18.3	15.6
South Eastern	491.9	360.8	426.9	18.3	-13.2	15.5
Southern Highlands	191.9	206.3	174.2	-15.6	-9.2	6.3
<b>Total</b>	<b>2,702.1</b>	<b>2,539.4</b>	<b>2,751.3</b>	<b>8.3</b>	<b>1.8</b>	<b>100.0</b>

Source: National Bureau of Statistics, respective industries, and Bank of Tanzania computations

Note: r denotes revised data; p, provisional data; and “---”, a change that exceeds 100 percent

### 3.4 Mining

Value of mineral recovery increased by 23.4 percent to USD 702.3 million from USD 569.1 million recorded in a similar quarter in 2019, with all zones with mineral recovery activities recording an improvement in value (**Table 3.4**). The increase in value was on account of an increase in the quantity produced as well as a rise in the world market price of gold following increased demand for gold as an alternative asset to other financial assets that witnessed decline in return owing to demand challenges posed by the outbreak and spread of COVID-19. Lake zone contributed 77.8 percent of the total value of minerals, followed by Southern Highlands zone with 12.7 percent.



*Consolidated Zonal Economic Performance Report*

**Table 3.4: Value of Selected Mineral Recovery**

Zone	Millions of USD					
	Quarter ending			Percentage change		Percentage contribution Dec-20
	Dec-19	Sep-20 <sup>r</sup>	Dec-20 <sup>p</sup>	Sep-20 to Dec-20	Dec-19 to Dec-20	
Central	18.4	24.7	25.3	2.4	37.7	3.6
Lake	441.2	532.6	532.7	0.0	20.7	75.8
Northern	14.7	19.5	19.8	1.6	34.9	2.8
South Eastern	27.7	35.6	35.5	-0.4	27.8	5.0
Southern Highlands	67.1	83.4	89.0	6.7	32.6	12.7
<b>Total</b>	<b>569.1</b>	<b>695.9</b>	<b>702.3</b>	<b>0.9</b>	<b>23.4</b>	<b>100.0</b>

Source: Tanzania Mining Commission, Regional Residence Mines Offices, Mining Companies and Bank of Tanzania computations

Note: r denotes revised data; and p, provisional data

### **3.5 Tourism**

Number of visitors to tourist attraction sites decreased to 227,099 from 549,795 recorded in the corresponding period a year earlier. Similarly, earnings from tourist attraction sites declined by 74.9 percent to TZS 17.4 billion. The decrease was primarily attributed to the outbreak of the COVID-19 pandemic with the associated lockdown and travel restriction measures taken by most of the source markets, including Europe, the USA, and South Africa. Northern zone remained dominant, contributing about 51.6 percent of total number of visitors and 69.6 percent of earnings from tourist attraction sites followed by Lake zone (**Table 3.5**).





Consolidated Zonal Economic Performance Report

**Table 3.5: Visitors and Earnings in Tourist Attractions by Zone**

Zone	Unit of measure	Quarter ending		Percentage change	Percentage contribution Dec-20
		Dec-19 <sup>r</sup>	Dec-20 <sup>P</sup>		
Central	Number of visitors	21,612	15,001	-30.6	6.6
	Earnings (Millions of TZS)	861.6	604.9	-29.8	3.5
Dar es Salaam	Number of visitors	8,740	27,906	---	12.3
	Earnings (Millions of TZS)	76.7	107.8	40.5	0.6
Lake	Number of visitors	121,446	54,068	-55.5	23.8
	Earnings (Millions of TZS)	17,100.1	3,426.1	-80.0	19.6
Northern	Number of visitors	382,670	117,181	-69.4	51.6
	Earnings (Millions of TZS)	50,615.8	12,134.8	-76.0	69.6
South Eastern	Number of visitors	3,684	6,366	72.8	2.8
	Earnings (Millions of TZS)	211.0	165.5	-21.6	0.9
Southern Highlands	Number of visitors	11,643	6,577	-43.5	2.9
	Earnings (Millions of TZS)	700.5	998.1	42.5	5.7
Total	Number of visitors	549,795	227,099	-58.7	100.0
	Earnings (Millions of TZS)	69,565.7	17,437.2	-74.9	100.0

Source: Tanzania National Park, Ngorongoro Conservation Area, National Museum and House of Culture, and Bank of Tanzania computations

Note: “---” denotes change that exceeds 100 percent; r, revised data; and p, provisional data

### 3.6 Energy

Electricity generated and distributed rose by 1.7 percent to a cumulative output of 1,966,007.4 MWh from 1,932.912.6 MWh in the corresponding quarter in 2019 (**Table 3.6**). The increase was recorded in all zones except South Eastern and Northern zones. Electricity generated in Southern Highlands and Central zones increased partly on account of adequate rainfall that increased water levels in Mtera and Kidatu dams. The decrease in electricity generation in Northern zone was due to relatively low rainfall that reduced water in New Pangani, and Hale falls, while in South Eastern zone the decrease occurred in all thermal power sources following stability of power supply from the national grid. Dar es Salaam zone, accounted for the largest share of 66.8 percent of total electricity generation.

Natural gas production from Songo Songo and Mnazi Bay fields decreased by 3.6 percent to 16,141.7 Million Standard Cubic Feet (MSCF) from 14,311.7 MSCF recorded in a similar period in 2019. The decline was partly due to the low demand for gas-fired electricity by downstream users, particularly by TANESCO.



*Consolidated Zonal Economic Performance Report*

**Table 3.6: Production of Electricity and Natural Gas**

Zone	Quarter ending			Percentage change		Percentage contribution Dec-20
	Dec-19	Sep-20	Dec-20	Sep-20 to Dec-20	Dec-19 to Dec-20	
<b>Electricity (MWh):</b>						
Central	398,251.4	463,262.7	422,452.9	-8.8	6.1	21.5
Dar es Salaam	1,309,419.1	1,103,804.0	1,313,257.1	19.0	0.3	66.8
Lake	28,918.7	37,303.3	35,410.5	-5.1	22.4	1.8
Northern	147,925.3	145,893.5	119,175.5	-18.3	-19.4	6.1
South Eastern	27,616.3	23,183.5	25,735.2	11.0	-6.8	1.3
Southern Highlands	20,781.7	50,169.0	49,976.0	-0.4	---	2.5
<b>Total</b>	<b>1,932,912.6</b>	<b>1,823,616.1</b>	<b>1,966,007.4</b>	<b>7.8</b>	<b>1.7</b>	<b>100.0</b>
<b>Natural gas (MMSCF):</b>						
South Eastern	16,749.2	14,738.0	16,141.7	9.5	-3.6	

Source: Tanzania Petroleum Development Corporation; Tanzania Electric Supply Company Limited, and Bank of Tanzania computations

Note: MWh denotes Megawatts hour; MMSCF, million standard cubic feet; and “---”, change that exceeds 100 percent

## **4.0 GOVERNMENT REVENUE PERFORMANCE**

### **4.1 Central Government Revenue**

Central Government revenue collection amounted to TZS 4,734.5 billion, equivalent to 79.2 percent of the set target (**Table 4.1** and **Table 4.2**). Tax on imports and on local goods and services contributed 39.8 percent and 34.8 percent of the total tax collection, in that order. During the period, the Government continued to implement various measures to improve tax compliance, administration, and management, including the emphasis on using Electronic Fiscal Devices (EFDs), taxpayers’ awareness campaigns, close monitoring, and follow-up of tax arrears. Dar es Salaam zone accounted for 89.6 percent of total tax collection, followed by Northern and Lake zones with 3.6 percent and 2.3 percent, respectively.



Consolidated Zonal Economic Performance Report

**Table 4.1: Revenue Performance by Zone**

Billions of TZS

Zone	Quarter ending			Actual to target ratio	Percentage change Dec-19 to Dec-20	Percentage contribution Dec-20	
	Dec-19 <sup>r</sup>	Sep-20	Dec-20 <sup>P</sup>				
	Actual	Target	Actual				
Central	49.8	69.6	89.5	81.4	90.9	63.3	1.7
Dar es Salaam	4,378.7	3,831.6	5,334.2	4,240.1	79.5	-3.2	89.6
Lake	112.4	80.5	150.5	110.3	73.3	-1.9	2.3
Northern	210.2	175.2	271.8	169.0	62.2	-19.6	3.6
South Eastern	73.0	39.0	63.2	63.9	101.1	-12.5	1.3
Southern Highlands	63.0	56.6	72.1	69.9	96.9	10.9	1.5
Total	4,887.1	4,252.5	5,981.3	4,734.5	79.2	-3.1	100.0

Source: Tanzania Revenue Authority

Note: Revenue is on gross basis; r denotes revised data; and p, provisional data

**Table 4.2: Revenue Performance by Category**

Billions of TZS

Quarter ending	Category	Central	Dar es Salaam	Lake	Northern	South Eastern	Southern Highlands	Total	Percentage contribution
Dec-19 <sup>r</sup>	Tax on imports	0.6	1,755.2	39.5	65.1	44.3	22.7	1,927.5	39.4
	Tax on local goods and services	12.0	1,325.2	34.7	54.9	8.2	14.8	1,449.7	29.7
	Direct tax	37.1	1,294.6	38.1	90.2	20.5	24.2	1,504.8	30.8
	Other taxes	0.0	3.7	0.0	0.0	0.0	1.3	4.9	0.1
	Total	49.8	4,378.7	112.4	210.2	73.0	63.0	4,887.1	100.0
Sep-20	Tax on imports	0.7	1,682.2	37.6	58.9	8.8	21.0	1,809.2	42.5
	Tax on local goods and services	11.4	1,225.3	22.4	46.6	11.6	11.4	1,328.6	31.2
	Direct tax	57.6	922.9	20.5	69.7	18.6	24.2	1,113.4	26.2
	Other taxes	0.0	1.3	0.0	0.0	0.0	0.0	1.3	0.0
	Total	69.6	3,831.6	80.5	175.2	39.0	56.6	4,252.5	100.0
Dec-20 <sup>P</sup>	Tax on imports	0.4	1,731.2	32.1	70.1	31.7	21.0	1,886.5	39.8
	Tax on local goods and services	11.1	1,523.4	37.3	41.4	13.8	19.9	1,646.9	34.8
	Direct tax	69.9	983.7	40.9	57.5	18.4	29.0	1,199.3	25.3
	Other taxes	0.0	1.8	0.0	0.0	0.0	0.0	1.8	0.0
	Total	81.4	4,240.1	110.3	169.0	63.9	69.9	4,734.5	100.0

Source: Tanzania Revenue Authority

Note: r denotes revised data; and p, provisional data

#### 4.2 Local Government Revenue Collection

Local Government Authorities revenue collection increased to TZS 272.3 billion from TZS 251.6 billion collected during the similar quarter in 2019, partly attributed to non-tax payment enforcement and introduction of point of sales (POS) devices (**Table 4.3**). Actual non-tax revenue collection was equivalent to 83.9 percent of the target. Central zone accounted for the largest share of total non-tax revenue by 31.0 percent, followed by Dar es Salaam and Southern Highlands zones with 17.0 percent and 15.5 percent, respectively.



Consolidated Zonal Economic Performance Report

**Table 4.3: Local Government Revenue Performance by Category**

Billions of TZS

Zone	Quarter ending			Actual to target ratio	Percentage change Dec-19 to Dec-20	Percentage contribution Dec-20	
	Dec-19 <sup>r</sup>	Sep-20	Dec-20 <sup>p</sup>				
	Actual	Target	Actual				
Central	95.1	74.1	99.6	84.3	84.7	-11.4	31.0
Dar es salaam	45.0	39.5	41.3	46.3	112.2	2.9	17.0
Lake	37.6	38.4	43.6	38.9	89.2	3.5	14.3
Northern	19.8	21.5	53.9	29.3	54.3	47.8	10.7
South Eastern	27.0	19.5	26.3	31.2	118.6	15.6	11.5
Southern Highlands	27.1	43.7	60.0	42.3	70.5	56.1	15.5
Total	251.6	236.7	324.7	272.3	83.9	8.2	100.0

Source: Regional Administrative Secretary Offices

Note: r denotes revised data; and p, provisional data

## 5.0 TRADE

### 5.1 Cross Border Trade

Cross border trade with neighboring countries continued to record surplus, albeit lower than in the corresponding quarter in 2019. The overall trade balance recorded a surplus of TZS 564.3 billion, a decline of 53.7 percent compared to a trade surplus recorded during the corresponding quarter last year (**Table 5.1**). The decline in trade surplus was largely driven by a decrease in the value of exports in Northern and Southern Highlands zones due to demand related factors particularly for agricultural produce. Meanwhile, imports increased by 38.0 percent to TZS 116.5 billion following an increase in capital and intermediate goods for on-going development projects undertaken by the Government and expanding manufacturing sector, respectively.



Consolidated Zonal Economic Performance Report

**Table 5.1: Cross Border Trade**

Millions of TZS

Zone		Quarter ending			Percentage change	
		Dec-19 <sup>r</sup>	Sep-20 <sup>r</sup>	Dec-20 <sup>P</sup>	Sep-20 to Dec-20	Dec-19 to Dec-20
Lake	Exports	667.9	1,045.4	747.0	-28.5	11.9
	Imports	143.2	138.5	126.7	-8.6	-11.6
	Trade balance	524.6	906.9	620.3	-31.6	18.2
Nothern	Exports	961,003.0	754,196.3	654,624.0	-13.2	-31.9
	Imports	128,100.0	138,900.0	96,438.0	-30.6	-24.7
	Trade balance	832,903.0	615,296.3	558,186.0	-9.3	-33.0
South Eastern	Exports	723.2	2,042.3	1,030.1	-49.6	42.4
	Imports	684.1	280.3	315.5	12.5	-53.9
	Trade balance	39.1	1,761.9	714.6	-59.4	---
Southern Highlands	Exports	468,769.8	119,260.1	121,329.7	1.7	-74.1
	Imports	84,407.5	110,452.1	116,507.3	5.5	38.0
	Trade balance	384,362.3	8,808.0	4,822.4	-45.2	-98.7
Total	Exports	1,431,163.9	876,544.0	777,730.8	-11.3	-45.7
	Imports	213,334.9	249,771.0	213,387.5	-14.6	0.0
	Trade balance	1,217,829.0	626,773.1	564,343.3	-10.0	-53.7

Source: Tanzania Revenue Authority

Note: r denotes revised data; p, provisional data; and "---", change that exceed 100 percent

## 5.2 Ports Performance

Volume of cargo handled through Dar es Salaam, Tanga, Mtwara, Kilwa, Lindi, Kigoma, and Mwanza ports amounted to 4,652,888.4 tonnes, lower by 3.1 percent than the volume handled in the corresponding quarter in 2019. Much of the decline was registered in Dar es Salaam, Mtwara, Kilwa, and Lindi ports (**Table 5.2**). The decrease in cargo handling in Dar es Salaam port, which accounted for 91.6 percent of total cargo, was largely on account of a decrease in the volume of transit cargo, while that of Mtwara port was explained by a decline in the export of cashew nuts and coal coupled with a reduction in import of fuel. Conversely, cargo handled at Tanga port rose due to increased importation of dry bulk cargo, including clinker for cement manufacturing.



Consolidated Zonal Economic Performance Report

**Table 5.2: Ports Performance**

Zone	Port	Quarter ending			Percentage change		Percentage contribution
		Dec-19 <sup>r</sup>	Sep-20	Dec-20 <sup>P</sup>	Sep-20 to Dec-20	Dec-19 to Dec-20	Dec-20
Dar es Salaam	Dar es Salaam	4,431,668.0	3,922,931.0	4,261,645.4	8.6	-3.8	91.6
Lake	Kigoma	54,511.0	69,324.0	73,784.0	6.4	35.4	1.6
	Mwanza	36,947.0	37,041.0	54,511.0	47.2	47.5	1.2
Northern	Tanga	159,278.0	159,317.0	189,889.0	19.2	19.2	4.1
South Eastern	Mtwara	113,559.0	27,356.0	70,536.0	157.8	-37.9	1.5
	Kilwa	2,564.0	3,308.0	1,587.0	-52.0	-38.1	0.0
	Lindi	1,099.0	598.0	936.0	56.5	-14.8	0.0
Total		4,799,626.0	4,219,875.0	4,652,888.4	10.3	-3.1	100.0

Source: Tanzania Port Authority

Note: r denotes revised data; and p, provisional data

## 6.0 FINANCIAL SECTOR DEVELOPMENTS

### 6.1 Banks' Deposits and Lending

Deposits mobilized by commercial banks increased by 3.6 percent to TZS 20,926.1 billion from the amount recorded at the end of the corresponding quarter in 2019. Deposit mobilization increased across all zones, except for Northern and South Eastern zones, mainly associated with continued good performance in agent banking transactions and the increased use of mobile banking platforms. The highest growth in deposits was registered in Lake and Central zones at 12.7 percent and 12.6 percent, respectively. Dar es Salaam zone remained dominant, accounting for 65.5 percent of total deposits, followed by Northern zone at 9.9 percent (**Table 6.1**).

**Table 6.1: Banks' Deposits**

Zone	Outstanding balance			Percentage change		Percentage contribution
	Dec-19 <sup>r</sup>	Sep-20 <sup>r</sup>	Dec-20 <sup>P</sup>	Sep-20 to Dec-20	Dec-19 to Dec-20	Dec-20
Central	1,556.6	1,463.8	1,753.5	19.8	12.6	8.4
Dar es Salaam	13,010.8	13,665.4	13,708.7	0.3	5.4	65.5
Lake	1,533.3	1,927.2	1,728.6	-10.3	12.7	8.3
Northern	2,499.1	2,427.4	2,078.7	-14.4	-16.8	9.9
South Eastern	780.8	734.1	758.4	3.3	-2.9	3.6
Southern Highlands	821.8	1,230.3	898.1	-27.0	9.3	4.3
Total*	20,202.5	21,448.2	20,926.1	-2.4	3.6	100.0

Source: Banks and Bank of Tanzania computations

Note: \* data excludes Zanzibar; r denotes revised data; and p, provisional data





Consolidated Zonal Economic Performance Report

Banks' credit to various economic activities grew by 5.8 percent to TZS 16,916.9 billion at the end of December 2020 from the amount recorded at the end of the corresponding period in 2019. Dar es Salaam zone accounted for 62.1 percent of total credit, followed by Lake zone 12.4 percent. Credit growth was more pronounced in Central, South Eastern, and Lake zones. Personal, trade and agriculture collectively accounted for 66.4 percent of the total outstanding credit (Table 6.2 and Table 6.3).

**Table 6.2: Banks' Lending**

Zone	Outstanding balance			Percentage change		Percentage contribution
	Dec-19 <sup>r</sup>	Sep-20 <sup>r</sup>	Dec-20 <sup>p</sup>	Sep-20 to Dec-20	Dec-19 to Dec-20	Dec-20
	Billions of TZS					
Central	1,133.8	1,307.8	1,420.3	8.6	25.3	8.4
Dar es Salaam	9,933.6	10,301.3	10,504.0	2.0	5.7	62.1
Lake	1,875.8	2,257.6	2,105.9	-6.7	12.3	12.4
Northern	1,793.1	1,694.3	1,548.4	-8.6	-13.6	9.2
South Eastern	636.2	717.1	761.5	6.2	19.7	4.5
Southern Highlands	611.1	613.3	576.6	-6.0	-5.6	3.4
Total*	15,983.5	16,891.3	16,916.9	0.2	5.8	100.0

Source: Banks and Bank of Tanzania computations

Note: \*data excludes Zanzibar; r denotes revised data; and p, provisional data

**Table 6.3: Percentage Share of Banks' Lending by Activity as at the end of December 2020**

Activity	Central	Dar es Salaam	Lake	Northern	South Eastern	Southern Highlands	Average
Agriculture, hunting, forestry and fishing	10.4	2.2	9.1	6.3	12.1	18.5	9.8
Manufacturing	2.3	12.2	7.2	4.5	4.1	1.8	5.3
Building and construction	1.0	9.8	3.2	0.8	2.1	12.5	4.9
Mining and quarrying	0.0	1.7	0.3	0.8	0.8	3.6	1.2
Real estate	0.4	7.5	0.4	0.7	1.1	0.6	1.8
Financial intermediation	0.2	2.2	0.1	0.1	0.2	0.5	0.6
Transport, storage and communication	0.7	8.6	1.2	3.2	2.7	6.0	3.7
Wholesale and retail trade	6.6	20.6	48.7	11.6	11.1	14.5	18.9
Electricity, gas and water	0.0	2.5	0.4	0.5	1.9	1.1	1.1
Tourism, hotels and restaurants	1.1	3.8	1.1	6.7	0.4	1.5	2.4
Social (health and education)	1.8	10.3	1.9	39.7	3.3	4.1	10.2
Personal	74.5	15.8	24.7	20.1	57.8	33.7	37.8
Others	0.9	2.8	1.6	4.8	2.5	1.6	2.4

Source: Banks and Bank of Tanzania computations



## 6.2 Savings and Credit Cooperative Societies

Savings and Credit Cooperative Societies (SACCOS) registered low performance mainly in loans issued and savings mobilized compared with the corresponding period in 2019 (**Table 6.4**). Loans issued declined by 45.1 percent while saving decreased by 27.0 percent, partly on account of the decline in the number of operating SACCOS and members. The number of SACCOS and members decreased by 8.5 percent and 8.8 percent, respectively partly due to on-going measures to deregister inactive SACCOS.

**Table 6.4: Performance of Savings and Credit Cooperative Societies**

Quarter ending	Category	Central	Lake	Northern	South Eastern	Southern Highlands	Total
Dec-19 <sup>r</sup>	Number of SACCOS	884	751	1,029	406	659	3,729
	Members	176,563	114,373	221,846	78,534	123,502	714,818
	Shares value (Millions of TZS)	16,660.0	3,463.1	17,998.4	3,910.1	14,197.7	56,229
	Savings (Millions of TZS)	22,165.6	9,728.3	99,821.3	13,535.9	45,910.9	191,162
	Deposits (Millions of TZS)	3,808.5	2,446.6	23,627.8	9,008.9	13,125.7	52,017
	Loans issued (Millions of TZS)	191,960.0	27,465.3	528,860.7	41,908.7	136,550.1	926,745
	Outstanding loans (Millions of TZS)	48,423.9	9,244.8	296,795.7	18,301.2	58,635.5	431,401
Sep-20 <sup>r</sup>	Number of SACCOS	860	735	877	348	593	3,413
	Members	133,133	129,898	204,632	66,787	117,225	651,675
	Shares value (Millions of TZS)	7,022.6	6,876.4	15,800.4	3,927.4	13,929.1	47,556
	Savings (Millions of TZS)	27,432.9	18,509.6	91,744.3	18,255.5	46,568.5	202,511
	Deposits (Millions of TZS)	5,293.9	1,448.2	22,175.3	3,667.7	12,988.8	45,574
	Loans issued (Millions of TZS)	145,796.7	30,202.1	551,270.1	40,481.3	153,894.0	921,644
	Outstanding loans (Millions of TZS)	49,581.5	23,615.2	278,054.8	16,959.0	62,645.9	430,856
Dec-20 <sup>P</sup>	Number of SACCOS	884	761	282	318	578	2,823
	Members	134,920	136,833	90,393	61,507	116,978	540,631
	Shares value (Millions of TZS)	8,966.0	8,054.3	6,401.9	3,820.7	14,767.7	42,011
	Savings (Millions of TZS)	22,331.0	20,917.0	31,530.3	18,526.3	46,153.3	139,458
	Deposits (Millions of TZS)	6,213.0	2,329.5	25,240.1	3,652.8	13,855.3	51,291
	Loans issued (Millions of TZS)	202,912.5	46,120.4	87,028.0	22,674.7	149,934.1	508,670
	Outstanding loans (Millions of TZS)	48,463.1	31,375.1	231,181.9	10,485.3	54,076.0	375,581

Source: Ministry of Agriculture and Regional Authorities

Note: r denotes revised data; and p, provisional data



## 7.0 STATISTICAL ANNEXES

### Annex 1: Regional Gross Domestic Product at Current Prices, Tanzania Mainland

Millions of TZS

Region	2014	2015	2016	2017	2018 <sup>r</sup>	2019 <sup>p</sup>
Dar es salaam	14,207,782.7	16,231,328.6	18,425,323.5	20,546,950.8	22,521,298.0	23,896,520.3
Mwanza	5,476,426.0	6,313,142.2	7,813,158.7	8,709,540.3	9,545,154.3	10,285,442.4
Mbeya	6,145,692.0	5,303,678.9	6,091,395.2	6,663,157.9	7,296,183.4	7,849,917.4
Shinyanga	4,234,612.2	4,876,362.6	5,653,566.1	6,084,991.0	6,600,148.6	7,175,981.5
Morogoro	4,006,264.3	4,624,041.3	5,202,453.7	5,700,918.4	6,176,006.7	6,716,295.7
Arusha	3,923,660.9	4,435,304.9	5,094,048.1	5,570,251.5	5,985,038.1	6,562,356.1
Tanga	3,849,317.9	4,397,557.6	5,061,530.7	5,558,367.6	6,001,968.5	6,548,355.4
Kilimanjaro	3,750,193.8	4,284,315.8	4,812,271.3	5,261,476.8	5,740,421.5	6,298,586.2
Geita	4,141,542.7	4,490,341.6	4,894,472.4	5,310,502.5	5,751,274.3	6,211,376.2
Ruvuma	3,147,189.1	3,680,359.4	4,226,976.0	4,513,232.0	4,891,412.4	5,317,073.3
Tabora	3,246,313.1	3,585,991.2	4,118,592.0	4,394,463.4	4,703,384.7	5,177,151.0
Mara	3,031,544.3	3,463,312.5	3,977,692.8	4,335,060.1	4,609,350.4	5,107,167.5
Manyara	2,750,692.8	3,142,460.7	3,620,023.5	3,990,619.1	4,366,862.4	4,701,379.0
Iringa	3,060,273.0	3,584,729.7	3,696,825.1	3,934,576.6	4,139,233.7	4,340,719.8
Dodoma	2,511,143.0	2,736,677.5	3,164,808.5	3,479,914.0	3,863,134.1	4,309,713.4
Kigoma	2,378,977.6	2,736,677.5	3,143,136.0	3,325,545.6	3,616,746.0	3,917,850.8
Mtwara	2,089,865.7	2,453,572.9	2,926,346.4	3,230,478.5	3,543,706.0	3,805,851.5
Kagera	2,048,571.2	2,410,535.4	2,855,913.2	3,026,214.8	3,241,177.1	3,578,301.3
Rukwa	1,917,155.6	2,170,751.1	2,518,426.6	2,543,246.7	2,753,744.4	3,008,953.9
Lindi	1,536,423.0	1,755,248.3	2,124,304.7	2,351,590.5	2,523,610.0	2,770,426.9
Coast	1,495,121.3	1,708,064.2	1,950,914.2	2,315,568.3	2,504,504.5	2,727,988.7
Singida	1,528,162.7	1,698,627.4	2,005,093.2	2,220,956.9	2,412,101.5	2,616,526.4
Songwe		1,717,314.4	1,972,374.5	2,173,228.8	2,351,543.9	2,560,297.5
Njombe	1,226,842.8	1,416,784.4	1,629,302.0	1,889,990.3	2,173,488.9	2,521,247.1
Katavi	899,619.9	1,132,135.5	1,383,375.8	1,613,655.6	1,732,407.9	1,888,324.6
<b>Total</b>	<b>82,603,387.7</b>	<b>94,349,315.7</b>	<b>108,362,324.3</b>	<b>118,744,498.4</b>	<b>129,043,901.3</b>	<b>139,893,804.1</b>

Source: National Bureau of Statistics

Note: r denotes revised data; and p, provisional data



Consolidated Zonal Economic Performance Report

**Annex 2: Regional Per Capita Gross Domestic Product at Current Prices, Tanzania Mainland**

TZS						
Region	2014	2015	2016	2017	2018 <sup>r</sup>	2019 <sup>p</sup>
Dar es salaam	14,207,782.7	16,231,328.6	18,425,323.5	20,546,950.8	22,521,298.0	23,896,520.3
Mwanza	5,476,426.0	6,313,142.2	7,813,158.7	8,709,540.3	9,545,154.3	10,285,442.4
Mbeya	6,145,692.0	5,303,678.9	6,091,395.2	6,663,157.9	7,296,183.4	7,849,917.4
Shinyanga	4,234,612.2	4,876,362.6	5,653,566.1	6,084,991.0	6,600,148.6	7,175,981.5
Morogoro	4,006,264.3	4,624,041.3	5,202,453.7	5,700,918.4	6,176,006.7	6,716,295.7
Arusha	3,923,660.9	4,435,304.9	5,094,048.1	5,570,251.5	5,985,038.1	6,562,356.1
Tanga	3,849,317.9	4,397,557.6	5,061,530.7	5,558,367.6	6,001,968.5	6,548,355.4
Kilimanjaro	3,750,193.8	4,284,315.8	4,812,271.3	5,261,476.8	5,740,421.5	6,298,586.2
Geita	4,141,542.7	4,490,341.6	4,894,472.4	5,310,502.5	5,751,274.3	6,211,376.2
Ruvuma	3,147,189.1	3,680,359.4	4,226,976.0	4,513,232.0	4,891,412.4	5,317,073.3
Tabora	3,246,313.1	3,585,991.2	4,118,592.0	4,394,463.4	4,703,384.7	5,177,151.0
Mara	3,031,544.3	3,463,312.5	3,977,692.8	4,335,060.1	4,609,350.4	5,107,167.5
Manyara	2,750,692.8	3,142,460.7	3,620,023.5	3,990,619.1	4,366,862.4	4,701,379.0
Iringa	3,060,273.0	3,584,729.7	3,696,825.1	3,934,576.6	4,139,233.7	4,340,719.8
Dodoma	2,511,143.0	2,736,677.5	3,164,808.5	3,479,914.0	3,863,134.1	4,309,713.4
Kigoma	2,378,977.6	2,736,677.5	3,143,136.0	3,325,545.6	3,616,746.0	3,917,850.8
Mtwara	2,089,865.7	2,453,572.9	2,926,346.4	3,230,478.5	3,543,706.0	3,805,851.5
Kagera	2,048,571.2	2,410,535.4	2,855,913.2	3,026,214.8	3,241,177.1	3,578,301.3
Rukwa	1,917,155.6	2,170,751.1	2,518,426.6	2,543,246.7	2,753,744.4	3,008,953.9
Lindi	1,536,423.0	1,755,248.3	2,124,304.7	2,351,590.5	2,523,610.0	2,770,426.9
Coast	1,495,121.3	1,708,064.2	1,950,914.2	2,315,568.3	2,504,504.5	2,727,988.7
Singida	1,528,162.7	1,698,627.4	2,005,093.2	2,220,956.9	2,412,101.5	2,616,526.4
Songwe		1,717,314.4	1,972,374.5	2,173,228.8	2,351,543.9	2,560,297.5
Njombe	1,226,842.8	1,416,784.4	1,629,302.0	1,889,990.3	2,173,488.9	2,521,247.1
Katavi	899,619.9	1,132,135.5	1,383,375.8	1,613,655.6	1,732,407.9	1,888,324.6
<b>Total</b>	<b>82,603,387.7</b>	<b>94,349,315.7</b>	<b>108,362,324.3</b>	<b>118,744,498.4</b>	<b>129,043,901.3</b>	<b>139,893,804.1</b>

Source: National Bureau of Statistics and Bank of Tanzania computations

Note: r denotes revised data; and p, provisional data



Consolidated Zonal Economic Performance Report

Annex 3: Zonal Consumer Price Index

Base: December 2015 = 100

Zone	Central			Dar es Salaam			Lake			Northern			South Eastern			Southern Highlands		
	Headline	Food	Non-food	Headline	Food	Non-food	Headline	Food	Non-food	Headline	Food	Non-food	Headline	Food	Non-food	Headline	Food	Non-food
Weights (%)	100.0	41.5	58.5	100.0	26.3	73.7	100.0	40.7	59.3	100.0	40.6	59.4	100.0	48.4	51.6	100.0	41.4	58.6
Dec-17	108.8	112.9	105.9	106.1	109.6	104.9	110.5	117.0	106.0	107.0	111.1	104.2	113.3	115.8	110.9	112.0	106.8	115.7
Jan-18	109.2	114.0	105.8	107.1	111.9	105.4	111.5	119.2	106.2	107.8	112.0	104.9	114.5	118.7	110.5	113.6	109.3	116.6
Feb-18	110.3	114.5	107.3	107.2	113.1	105.1	114.0	121.2	109.0	108.6	113.4	105.4	116.0	121.0	111.3	114.5	110.9	117.0
Mar-18	112.8	114.5	111.7	108.1	116.5	105.1	114.9	123.4	109.0	109.9	115.5	106.1	117.1	122.1	112.4	115.1	110.9	118.0
Apr-18	112.5	113.6	111.8	109.2	117.8	106.2	115.0	123.3	109.3	111.5	117.0	107.8	116.7	122.1	111.6	115.0	110.1	118.5
May-18	110.8	109.6	111.7	107.1	112.8	105.0	114.7	120.1	111.1	112.3	117.9	108.5	120.1	125.8	114.8	116.2	108.4	121.7
Jun-18	107.2	108.5	106.2	108.1	115.6	105.5	113.8	117.9	110.9	110.9	117.0	106.7	120.4	126.7	114.5	115.3	106.5	121.6
Jul-18	108.3	107.7	108.8	109.1	118.8	105.7	114.4	118.8	111.3	109.8	114.4	106.6	117.7	121.7	114.0	115.4	105.6	122.4
Aug-18	109.0	108.2	109.5	106.6	108.1	106.0	114.3	118.0	111.8	109.7	113.3	107.2	117.1	119.5	114.8	115.0	104.7	122.3
Sep-18	107.9	106.9	108.7	106.6	107.0	106.5	115.1	118.2	113.0	110.3	113.1	108.4	117.4	120.0	114.9	116.4	106.2	123.6
Oct-18	108.0	107.0	108.8	106.6	105.5	107.0	112.8	112.5	113.1	109.1	109.7	108.7	118.4	122.2	114.8	116.4	105.7	124.0
Nov-18	108.5	107.7	109.1	107.8	106.6	108.3	113.0	112.7	113.2	109.1	109.2	109.1	116.7	118.9	114.7	117.3	106.7	124.7
Dec-18	108.5	107.8	109.1	108.8	107.8	109.2	114.0	115.5	113.0	108.0	107.9	108.0	117.8	119.9	115.9	117.9	108.5	124.6
Jan-19	108.5	109.9	107.5	108.7	106.5	109.5	114.2	115.8	113.1	108.8	108.6	108.9	118.8	122.0	115.9	118.5	110.0	124.6
Feb-19	110.0	110.9	109.3	109.6	107.9	110.2	116.2	119.0	114.2	110.2	111.0	109.7	120.1	123.5	117.0	120.6	110.1	128.0
Mar-19	111.5	113.2	110.2	110.6	110.1	110.7	118.0	120.2	116.6	112.4	112.7	112.1	122.3	126.0	118.9	121.3	111.9	128.0
Apr-19	112.1	115.2	109.9	110.9	110.7	111.0	118.6	121.6	116.5	112.9	114.0	112.2	123.4	127.1	120.0	121.9	112.8	128.3
May-19	111.7	115.4	109.1	111.7	112.9	111.3	119.3	121.4	117.8	112.9	114.8	111.5	123.7	127.0	120.5	121.8	112.9	128.1
Jun-19	110.7	113.7	108.6	111.7	113.1	111.2	118.8	121.3	117.1	113.7	117.4	111.1	123.6	127.5	119.9	121.3	113.0	127.2
Jul-19	110.1	112.6	108.3	111.5	112.0	111.3	118.4	120.2	117.1	113.4	117.0	111.0	123.1	126.8	119.5	120.6	111.8	126.8
Aug-19	109.2	110.6	108.2	110.7	109.5	111.1	118.6	120.6	117.2	113.4	116.8	111.1	121.8	124.2	119.6	120.4	111.5	126.7
Sep-19	108.5	108.8	108.3	110.9	109.8	111.3	118.4	120.4	117.0	112.5	115.2	110.6	122.3	124.4	120.4	120.3	110.5	127.3
Oct-19	108.6	111.6	106.6	111.4	112.4	111.0	118.0	120.3	116.3	112.2	113.7	111.1	120.9	121.7	120.2	120.2	110.5	127.0
Nov-19	110.0	114.0	107.2	111.8	112.9	111.4	118.2	120.7	116.4	112.0	113.2	111.1	121.4	122.7	120.3	120.9	111.2	127.8
Dec-19	109.7	113.7	106.9	112.7	115.4	111.7	118.6	121.9	116.3	112.0	112.9	111.4	123.8	126.9	120.8	121.9	111.2	129.5
Jan-20	110.1	113.9	107.4	112.8	116.3	111.6	118.8	121.8	116.8	112.4	113.5	111.6	124.6	128.4	121.0	122.5	113.8	128.7
Feb-20	110.8	114.7	108.0	114.5	118.3	113.2	119.4	121.5	117.9	113.1	114.6	112.2	127.3	132.9	122.0	122.9	114.5	128.8
Mar-20	112.5	116.1	109.9	116.2	119.5	115.0	119.1	119.6	118.7	113.6	115.0	112.6	129.1	137.5	121.3	125.6	116.5	132.0
Apr-20	113.2	116.9	110.6	115.2	116.8	114.6	119.9	120.9	119.1	115.2	115.7	114.9	130.6	139.1	122.6	127.3	118.3	133.7
May-20	113.7	117.2	111.2	114.4	116.7	113.6	120.4	122.6	118.9	117.1	117.5	116.8	131.1	139.1	123.6	128.1	119.7	134.0
Jun-20	113.0	114.9	111.6	114.2	117.0	113.2	120.7	122.2	119.7	116.5	116.0	116.8	131.9	141.1	123.4	128.5	119.9	134.6
Jul-20	112.8	114.7	111.5	114.8	116.6	114.2	119.1	118.9	119.2	115.7	114.6	116.4	132.6	143.3	122.6	128.4	118.8	135.1
Aug-20	112.3	113.8	111.2	114.9	116.4	114.4	118.1	116.9	119.0	114.9	112.7	116.4	131.4	141.2	122.2	127.5	117.2	134.8
Sep-20	110.3	112.0	109.1	115.6	119.0	114.4	118.3	116.7	119.5	114.3	110.8	116.6	130.2	138.4	122.5	127.6	117.0	135.1
Oct-20	109.4	111.3	108.1	114.7	117.4	113.7	119.2	119.2	119.2	113.5	110.8	115.4	129.9	137.8	122.5	130.1	118.1	138.5
Nov-20	109.3	109.2	109.4	115.0	117.3	114.2	119.7	120.2	119.3	112.9	108.7	115.8	131.1	139.6	123.2	129.9	117.3	138.8
Dec-20	110.4	110.3	110.4	114.9	117.8	113.9	120.2	121.7	119.2	114.6	110.8	117.3	133.4	143.5	123.8	131.1	118.8	139.7

Source: National Bureau of Statistics



Consolidated Zonal Economic Performance Report

**Annex 4: Zonal Consumer Price Index – Twelve-Month Percentage Change**

Base: December 2015 = 100

Zone	Central			Dar es Salaam			Lake			Northern			South Eastern			Southern Highlands		
	Headline	Food	Non-food	Headline	Food	Non-food	Headline	Food	Non-food	Headline	Food	Non-food	Headline	Food	Non-food	Headline	Food	Non-food
Weights (%)	100.0	41.5	58.5	100.0	26.3	73.7	100.0	40.7	59.3	100.0	40.6	59.4	100.0	48.4	51.6	100.0	41.4	58.6
Dec-17	4.7	7.1	3.0	3.5	6.7	2.3	3.5	6.0	1.6	4.4	6.0	3.3	7.5	7.2	7.7	1.5	0.9	1.9
Jan-18	4.1	6.8	2.2	4.0	8.2	2.4	1.9	1.5	2.3	5.7	7.9	4.1	8.1	11.5	4.8	2.3	3.4	1.5
Feb-18	4.5	5.1	4.0	3.3	7.2	1.8	3.2	0.7	5.2	5.6	6.7	4.8	7.7	9.8	5.7	0.3	3.4	-1.7
Mar-18	4.8	1.3	7.5	3.5	8.5	1.6	2.6	-0.1	4.8	5.0	5.0	5.0	6.0	7.3	4.7	0.3	2.1	-0.8
Apr-18	4.7	0.2	8.1	3.5	7.6	1.9	2.3	-0.8	4.8	7.0	6.2	7.6	4.9	5.9	4.0	0.2	0.0	0.4
May-18	2.0	-4.8	7.3	1.4	2.4	1.0	2.2	-2.0	5.6	5.2	2.1	7.6	7.9	10.2	5.8	2.4	-0.9	4.6
Jun-18	-1.7	-6.2	1.7	3.0	6.4	1.7	1.7	-2.8	5.2	3.2	1.0	4.8	8.6	12.6	4.8	1.9	-2.6	4.9
Jul-18	-0.5	-5.9	3.8	3.6	9.4	1.4	3.0	-0.2	5.4	1.9	-0.5	3.7	6.0	8.2	4.0	3.8	-3.4	8.8
Aug-18	0.5	-4.4	4.3	1.6	1.3	1.7	3.0	-0.5	5.6	2.9	1.4	4.0	5.9	7.2	4.7	3.1	-3.3	7.4
Sep-18	-0.3	-5.1	3.5	1.2	1.0	1.2	3.0	-1.9	6.7	4.6	4.3	4.8	6.3	7.9	4.8	4.5	-1.5	8.5
Oct-18	0.3	-3.9	3.5	1.1	-0.5	1.6	1.5	-5.4	6.8	3.2	0.5	5.1	7.0	9.6	4.4	4.9	-0.7	8.6
Nov-18	-0.4	-5.0	3.2	2.5	0.7	3.2	1.1	-5.9	6.6	2.8	-0.3	5.0	5.0	5.9	4.1	4.6	-1.0	8.3
Dec-18	-0.2	-4.5	3.0	2.5	-1.6	4.1	3.2	-1.2	6.6	0.9	-2.9	3.6	4.0	3.5	4.5	5.3	1.6	7.7
Jan-19	-0.7	-3.7	1.6	1.6	-4.8	3.9	2.4	-2.9	6.5	1.0	-3.0	3.9	3.8	2.7	4.9	4.4	0.6	6.9
Feb-19	-0.3	-3.1	1.8	2.2	-4.6	4.8	1.9	-1.8	4.8	1.5	-2.1	4.1	3.6	2.1	5.1	5.3	-0.7	9.4
Mar-19	-1.2	-1.1	-1.3	2.3	-5.5	5.4	2.8	-2.6	6.9	2.2	-2.5	5.7	4.5	3.2	5.8	5.4	0.8	8.5
Apr-19	-0.4	1.5	-1.7	1.6	-6.0	4.5	3.2	-1.4	6.7	1.3	-2.5	4.1	5.8	4.1	7.5	6.0	2.5	8.3
May-19	0.8	5.3	-2.3	4.4	0.1	6.0	3.9	1.2	6.0	0.5	-2.6	2.8	3.0	1.0	5.0	4.8	4.1	5.3
Jun-19	3.3	4.8	2.2	3.3	-2.1	5.5	4.4	2.8	5.6	2.5	0.3	4.1	2.6	0.6	4.7	5.2	6.1	4.6
Jul-19	1.6	4.6	-0.4	2.2	-5.7	5.3	3.5	1.2	5.1	3.3	2.2	4.1	4.5	4.2	4.9	4.5	5.8	3.6
Aug-19	0.2	2.2	-1.2	3.8	1.2	4.8	3.7	2.2	4.8	3.4	3.1	3.6	4.0	3.9	4.2	4.7	6.4	3.6
Sep-19	0.6	1.8	-0.3	4.0	2.7	4.5	2.9	1.8	3.6	2.0	1.8	2.0	4.2	3.6	4.8	3.4	4.0	3.0
Oct-19	0.6	4.3	-2.0	4.5	6.6	3.7	4.5	6.9	2.9	2.8	3.6	2.2	2.2	-0.4	4.7	3.2	4.6	2.4
Nov-19	1.4	5.8	-1.7	3.7	5.9	2.9	4.6	7.1	2.9	2.6	3.7	1.9	4.1	3.2	4.9	3.1	4.2	2.5
Dec-19	1.1	5.5	-2.0	3.5	7.0	2.3	4.0	5.5	2.9	3.7	4.7	3.1	5.0	5.9	4.2	3.4	2.5	3.9
Jan-20	1.5	3.7	-0.1	3.8	9.2	1.9	4.1	5.2	3.3	3.3	4.5	2.5	4.9	5.3	4.5	3.4	3.5	3.3
Feb-20	0.7	3.4	-1.2	4.5	9.6	2.7	2.8	2.1	3.3	2.6	3.2	2.3	6.0	7.6	4.3	1.9	4.0	0.6
Mar-20	0.9	2.6	-0.3	5.1	8.5	3.9	0.9	-0.5	1.8	1.1	2.1	0.4	5.6	9.1	2.1	3.5	4.2	3.1
Apr-20	1.0	1.5	0.7	3.9	5.5	3.3	1.1	-0.6	2.2	2.0	1.5	2.4	5.8	9.4	2.2	4.4	4.9	4.1
May-20	1.8	1.6	2.0	2.4	3.4	2.1	0.9	0.9	0.9	3.7	2.4	4.7	6.0	9.5	2.6	5.1	6.0	4.6
Jun-20	2.1	1.1	2.8	2.2	3.4	1.8	1.6	0.8	2.2	2.5	-1.2	5.1	6.8	10.7	2.9	5.9	6.2	5.8
Jul-20	2.5	1.9	3.0	3.0	4.0	2.6	0.6	-1.1	1.9	2.0	-2.0	4.8	7.7	13.0	2.5	6.4	6.3	6.5
Aug-20	2.9	2.9	2.8	3.8	6.3	2.9	-0.4	-3.1	1.5	1.3	-3.5	4.8	7.9	13.7	2.2	5.9	5.1	6.3
Sep-20	1.6	2.9	0.8	4.3	8.3	2.9	0.0	-3.1	2.1	1.6	-3.8	5.4	6.4	11.3	1.7	6.0	5.9	6.2
Oct-20	0.7	-0.3	1.5	3.0	4.4	2.4	1.0	-0.9	2.4	1.2	-2.6	3.9	7.5	13.2	2.0	8.2	6.8	9.1
Nov-20	-0.6	-4.1	2.0	2.9	3.9	2.5	1.2	-0.5	2.5	0.8	-4.0	4.2	8.0	13.8	2.4	7.4	5.4	8.6
Dec-20	0.6	-3.0	3.3	2.0	2.1	1.9	1.4	-0.1	2.5	2.4	-1.9	5.3	7.7	13.1	2.5	7.5	6.9	7.9

Source: National Bureau of Statistics





Consolidated Zonal Economic Performance Report

Annex 5: Agent Banking Transactions

Region	Quarter ending														
	Dec-19			Mar-20			Jun-20			Sep-20			Dec-20 <sup>p</sup>		
	Number of agents	Value (Millions of TZS) Cash deposit	Cash withdrawal	Number of agents	Value (Millions of TZS) Cash deposit	Cash withdrawal	Number of agents	Value (Millions of TZS) Cash deposit	Cash withdrawal	Number of agents	Value (Millions of TZS) Cash deposit	Cash withdrawal	Number of agents	Value (Millions of TZS) Cash deposit	Cash withdrawal
Arusha	2,358	407,706.1	110,477.3	2,708	382,572.7	109,824.5	3,112	314,245.6	116,567.1	3,389	416,317.9	133,978.7	3,542	452,097.8	139,783.2
Coast	668	143,340.2	53,761.8	718	135,436.1	51,130.6	786	125,358.4	54,028.1	883	142,593.6	62,108.2	917	153,337.5	63,959.9
Dar es Salaam	9,358	1,301,647.9	397,781.3	10,293	1,200,121.3	393,262.8	11,308	1,115,458.9	416,304.2	12,218	1,385,753.4	522,577.1	12,753	1,530,438.4	562,788.9
Dodoma	1,558	223,660.6	82,094.1	1,685	203,627.3	78,695.0	1,954	247,903.8	103,069.6	2,119	305,637.4	122,641.8	2,208	318,963.9	124,895.6
Geita	285	173,252.6	41,593.2	342	159,924.3	46,484.8	423	186,136.4	59,451.6	463	220,803.0	60,223.6	517	237,029.5	64,574.5
Iringa	705	173,665.9	70,867.5	783	153,777.4	66,089.5	882	150,140.8	74,616.9	971	175,848.2	84,685.9	1,060	194,059.5	87,046.1
Kagera	636	226,520.8	57,203.8	677	203,672.0	55,339.4	829	214,228.0	67,536.5	903	278,011.3	93,784.9	950	259,337.4	80,355.0
Katavi	95	50,677.5	21,046.5	97	43,628.4	17,673.8	112	51,374.5	28,556.4	117	54,735.6	27,747.8	136	50,124.3	19,742.6
Kigoma	286	95,933.0	28,704.1	318	93,037.5	27,185.4	393	115,925.2	36,231.5	431	136,223.4	39,088.2	481	143,464.3	39,842.1
Kilimanjaro	1,198	193,135.6	52,907.5	1,288	191,433.6	54,451.6	1,474	172,671.4	53,550.5	1,581	198,250.1	62,513.7	1,597	226,020.0	72,589.3
Lindi	312	75,596.7	46,346.6	337	75,803.9	42,650.7	410	62,344.1	35,258.6	454	86,864.0	62,358.2	490	102,567.9	78,969.1
Manyara	333	85,996.6	31,416.0	363	77,285.0	30,656.6	430	87,295.3	44,279.7	465	100,468.2	49,717.4	485	125,767.7	55,669.5
Mara	538	135,528.5	35,326.1	572	125,814.6	36,002.7	704	138,404.3	50,474.3	793	173,120.6	60,348.1	836	175,843.7	50,965.1
Mbeya	1,585	321,600.4	111,203.9	1,747	286,278.3	104,197.0	1,948	304,870.0	126,912.4	2,054	370,211.3	142,981.0	2,079	395,367.5	151,114.8
Morogoro	1,344	295,710.5	120,844.9	1,410	261,987.5	103,947.3	1,638	233,065.1	104,206.9	1,763	282,092.5	132,391.2	1,816	312,893.8	136,332.6
Mtwara	474	149,747.0	87,493.3	510	126,330.3	56,130.8	648	94,232.8	43,123.0	737	116,851.4	59,586.9	786	168,022.8	116,868.3
Mwanza	2,189	340,576.3	90,238.2	2,411	308,914.1	89,998.6	2,727	352,676.5	123,440.7	2,988	422,413.2	143,837.1	3,078	413,094.2	139,466.8
Njombe	604	177,739.9	64,611.3	636	151,572.0	58,362.7	714	146,942.5	72,871.2	763	170,923.5	85,283.5	803	190,773.7	93,980.8
Rukwa	285	60,739.0	20,017.7	316	55,242.9	19,497.9	356	63,499.6	25,847.3	393	73,120.3	28,354.6	421	70,242.8	27,570.4
Ruvuma	394	126,718.3	62,767.1	442	119,581.3	57,243.6	528	121,087.4	61,519.8	576	151,036.7	71,422.5	633	162,889.3	83,441.2
Shinyanga	686	260,866.6	57,603.5	777	212,801.3	57,723.9	914	243,591.4	93,499.0	987	298,169.2	100,777.3	1,026	325,430.2	103,543.9
Simiyu	212	50,495.4	11,909.7	226	41,589.7	12,716.6	277	45,189.1	17,996.1	321	56,814.0	22,971.6	336	64,322.1	24,303.2
Singida	359	68,295.2	21,288.3	379	62,197.9	19,515.3	454	75,272.8	27,668.3	482	90,679.9	33,203.9	503	99,603.6	31,105.5
Songwe	258	116,469.9	34,604.2	299	115,188.8	32,203.9	357	133,692.9	48,102.2	387	171,071.5	55,465.0	408	173,115.1	57,224.1
Tabora	535	90,207.4	31,425.2	612	80,237.1	30,904.4	746	108,314.4	45,672.5	815	136,160.1	53,716.4	866	145,537.2	55,109.2
Tanga	584	136,106.2	37,596.4	642	141,864.8	41,901.3	758	140,793.6	46,509.6	874	165,395.1	55,620.4	941	192,420.3	59,256.2
Pemba	65	4,984.1	2,181.7	70	4,873.9	2,205.6	78	9,184.0	4,238.6	96	11,372.0	4,987.2	100	11,733.7	3,590.5
Unguja	454	41,956.7	17,023.8	497	47,506.0	17,899.5	563	46,357.8	20,751.1	660	57,033.9	22,554.2	642	69,400.4	24,187.0
Total	28,358	5,528,875.0	1,800,395.1	31,155	5,062,300.1	1,713,895.6	35,523	5,100,256.5	2,002,283.7	38,683	6,247,971.5	2,394,926.3	40,410	6,763,898.7	2,548,275.5

Source: Bank of Tanzania

Note: p denotes provisional data



For inquiries relating to this Consolidated Zonal  
Economic Performance Report contact:  
Director of Economic Research and Policy  
Bank of Tanzania, 2 Mirambo Street 11884 Dar es Salaam  
Telephone: +255 22 223 3328/9  
Fax: +255 22 223 4060  
Email: [botcommunications@bot.go.tz](mailto:botcommunications@bot.go.tz)